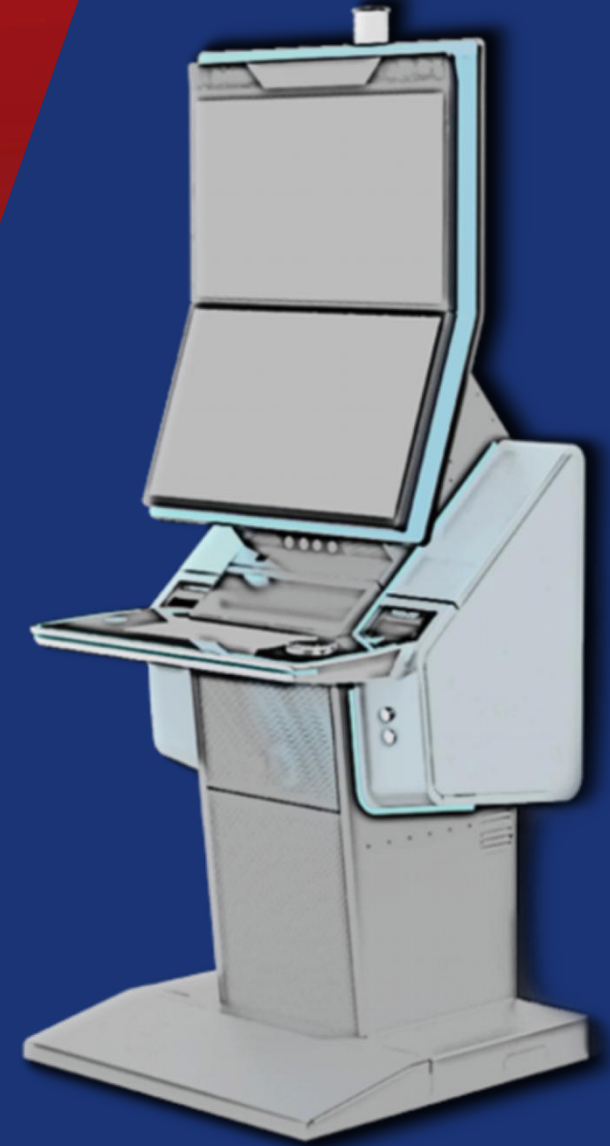


Casino Hardware Product Catalog

The Original Alternative For 15 Years



Upgrade Parts

MK6 Button Panel

Player Tracking Display

IGT NexGen 2

Bally iView 3.0

Bally iView 4.0

Aristocrat

Helix

Helix Plus

Helix XT

ARC / Helix / MK7

ARC

Mars X

Neptune

MK7 Viridian

Relm

Magic Button Lock

Light & Wonder

Kascada

TwinStar

Wave XL

Matrix

Alpha 2 Pro

DUALOS

DUALOS X

Cosmic

Cosmic Upright

Mural

LandMark 7000

Fusion

Equinox

IGT

CrystalSlant/CrystalDual

PeakBarTop

Peak

AXXIS 23/23

G20/G23

Player Tracking Display

Aruze Gaming

Muso

G-Station

X-Station

Cube X

Ainsworth

A600 Series

A700 Series

Everi

Empire Flex

Empire/Core

EGT

Multiplayer

Roulette R8

KONAMI

KGP KX43

Concerto

Dimension 27/49

JUMBO

Dual 27

Spintec

Charisma

Note:

This catalog introduces aftermarket components for field maintenance, service replacement, and lifecycle hardware support of casino gaming cabinets.

All cabinet names, model references, and part numbers are used solely for compatibility identification.

Upgrade Parts

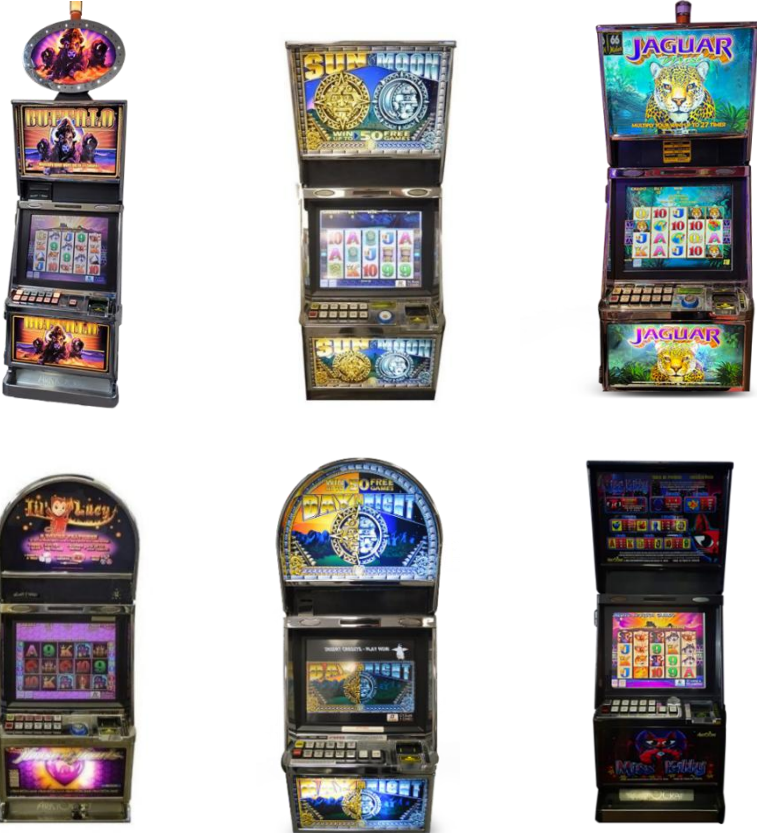


Fits all Aristocrat MK5 (MKV) / MK6 (MKVI) slot machines with the same mechanical button panel — **Easy replacement, Perfect fit.**

Old slots, New life.

We bring them back to life—stronger than ever.

Form Mechanical Button to LCD Touch Button Panel
—Revive Your Machine



(Brand name used for identification only)



AA Model: TBD062FEPC-V1

Compatible Service Components

6.2" Player Tracking Display



This independently engineered aftermarket 6.2-inch touch monitor is designed as a P-CAP upgrade solution for the display used in the IGT NexGen 2 Player Tracking System.

It is built to match the required mechanical fit, display specifications, and touch interface standards for reliable integration into the Reference machine structure.

The Reference resistive-touch monitor is upgraded to projected capacitive touch (P-CAP) for better usability, durability, and surface resistance.

Reference OEM P/N: 69975601 / 69975603

Reference OEM Model: KTL062DRI01 / KTL062DRI12

Pixels: 640*240

Interfaces: MX2.54-2P female, Mini DP female

AA Model: TOT062FERC-V1P



Compatible with IGT NexGen 2
(Brand name used for identification only)

Part numbers are provided for compatibility reference only.

Compatible Service Components



Compatible with Bally iView 3.0
(Brand name used for identification only)

Part numbers are provided for compatibility reference only.

6.2" Player Tracking Display



This independently engineered aftermarket 6.2-inch touch monitor is designed as a P-CAP upgrade solution for the display used in the **Bally iVIEW 3.0** Player Tracking System.

It is built to match the required mechanical fit, display specifications, and touch interface standards for reliable integration into the Reference machine structure.

The Reference resistive-touch monitor is upgraded to projected capacitive touch (P-CAP) for better usability, durability, and surface resistance.

Reference OEM P/N: 237787 C

Reference OEM Model: L061HKLTPT-LDA

Pixels: 640*240

Interfaces: DB25 female

AA Model: TOT062EPC-V5



Compatible Service Components



Compatible with Bally iView 4.0
(Brand name used for identification only)

Part numbers are provided for compatibility reference only.

6.2" Player Tracking Display

This independently engineered aftermarket 6.2-inch touch monitor is designed as a P-CAP upgrade solution for the display used in the **Bally iVIEW 4.0** Player Tracking System.

It is built to match the required mechanical fit, display specifications, and touch interface standards for reliable integration into the Reference machine structure.

The Reference resistive-touch monitor is upgraded to projected capacitive touch (P-CAP) for better usability, durability, and surface resistance.

Reference OEM P/N: 1452681 / 1452681-VAR

Reference OEM Model: L06C7KT2BY / L06M4KT0SG

Pixels: 640*240

Interfaces: DP female, Type-B USB female

AA Model: TOT062EPC-V6



Aristocrat Cabinet Platform



**SLOT
ACCESSORY
Zone**



Aristocrat is a registered trademark of Aristocrat Leisure Limited.
The name is used solely for compatibility identification purposes.

Compatible Service Components



Compatible with Aristocrat Helix
(Brand name used for identification only)

Part numbers are provided for compatibility reference only.



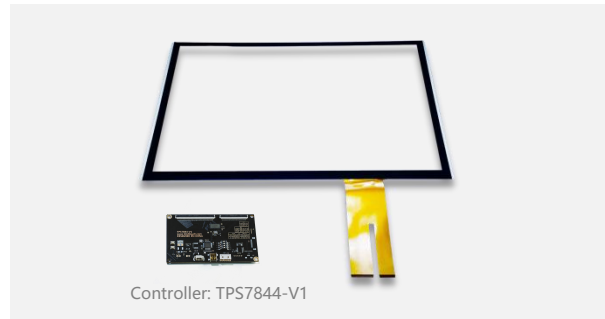
23" LCD (Lower) Touch Monitor

Reference Monitor Model: BRD236OELKTUA9
Reference OEM Monitor P/N: 170299-190
AA Model: TOT2302EPC-V2



23" LCD (Upper) Monitor

Reference Monitor Model: BRD236OELXP-A9
Reference OEM Monitor P/N: 170300-190
AA Model: TOM2302E00-V2



Controller: TPS7844-V1

23" Touchscreen&Controller

Reference OEM Monitor P/N: 170299-190
Reference Monitor Model: BRD236OELKTUA9
AA Model: TPC2302-V2GC



13-Dynamic Button Panel

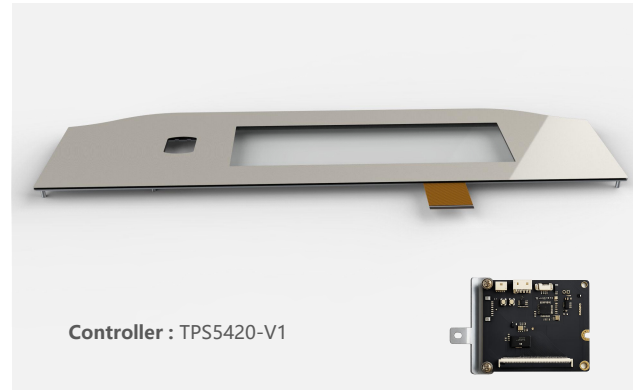
Reference OEM P/N: 170307_90 / 170307_90-1
Reference Model: GFA03335-002-09 / GFA03336-003-09
AA Model: TVB13A-V10 Color: Champagne

Compatible Service Components



Compatible with Aristocrat Helix+
(Brand name used for identification only)

Part numbers are provided for compatibility reference only.



11.8" Touchscreen&Controller(Single Button)

Reference OEM Monitor P/N: 171004-90
Reference Monitor Model: GFA05364-03
AA Model: TPC118F-V2GC



11.8" Touchscreen&Controller(Dual Button)

Reference OEM Monitor P/N: 171004-290 / 170962-90
Reference Monitor Model: GFA04647 / GFA04918-03
AA Model: TPC118F-V5GC



12.3" Button Panel (Single Button)

Reference OEM Monitor P/N: 171004-290 / 170962-90
Reference Monitor Model: GFA04647 / GFA04918-03
AA Model: TOT123FEPC-V1



12.3" Button Panel (Dual Button)

Reference OEM Monitor P/N: 171004-90
Reference Monitor Model: GFA05364-03
AA Model: TOT123FEPC-V2

Compatible Service Components



Compatible with Aristocrat Helix+
(Brand name used for identification only)

Part numbers are provided for compatibility reference only.



27" LCD (Lower) Touch Monitor

Reference Monitor Model: KTK270DPA02 / L27C5LTNAR
Reference OEM Monitor P/N: 171278-190 / 171278-190
AA Model: TOT2702EPC-V1



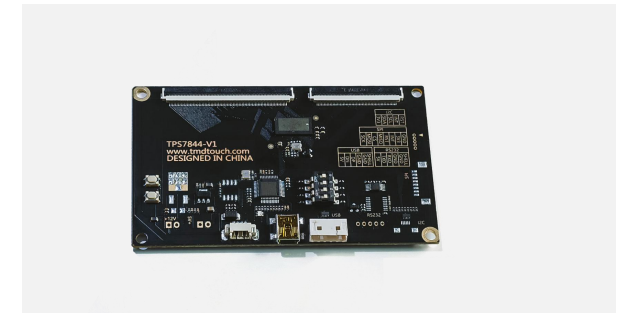
27" LCD (Upper) Monitor

Reference Monitor Model: KTK270DGA02
Reference OEM Monitor P/N: 171278-190
AA Model: TOM2702E00-V1



27" Touchscreen&Controller

Reference OEM Monitor P/N: KTK270DPA02 / L27C5LTNAR
Reference Monitor Model: 171278-190 / 171278-190
AA Model: TPC2702-V2GC



Controller : TPS7844-V1

Compatible Service Components



Compatible with Aristocrat Helix XT
(Brand name used for identification only)

Part numbers are provided for compatibility reference only.



Controller : TPS7844-V1

11.8" Touchscreen & Controller

Reference OEM Monitor P/N: 591566-206
Reference Monitor Model: KTB158DPA03
AA Model: TPC118F-V1GC



Controller : TPS7844-V1

11.8" Touchscreen & Controller

Reference OEM Monitor P/N: 591566-106
Reference Monitor Model: KTB158DPA01
AA Model: TPC118F-V3GC



Bash Button (Single Ribbon Cable)

Reference Model: W7AB-A01 / W7AB-A03
AA Model: TPB001-V1
Description: Single Ribbon Cable Bash Button



Bash Button (Dual Ribbon Cables)

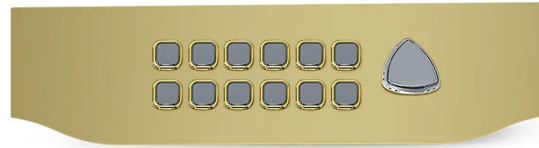
Reference Model: W7AB-A08 Reference Button P/N: 0805386A
AA Model: TPB002-V1
Description: Dual Ribbon Cables Bash Button

Compatible Service Components



Compatible with Aristocrat Helix | Helix+ | ARC | Relm | MK7 Viridian
(Brand name used for identification only)

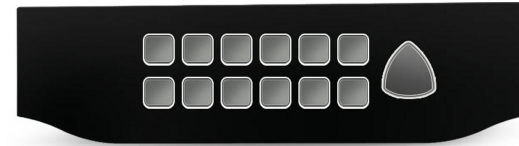
Part numbers are provided for compatibility reference only.



Reference Button P/N: 125158_8282-1
Reference Model: GFA04269-002-06
AA Model: TVB13A-V2GO
Color: Golden



Reference Button P/N:
170307_90 / 170307_90-1
Reference Model:
GFA03335-002-09 / GFA03336-003-09
AA Model: TVB13A-V1O
Color: Champagne



Reference Button P/N: 125158_0610
Reference Model: GFA04313-002
GFA04313-003-02
AA Model: TVB13A-V2BO
Color: Black



Helix Button Panel Plate (Champagne)



ARC Button Panel Plate (Black)



ARC Button Panel Plate (Golden)



TVB13A-PA01



TVB13A-PA02



TVB13A-PA03



TVB13A-OP02



TVB13A-CB01



TVB13A-PA05



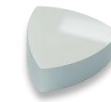
TVB13A-PA06



TVB13A-PA07



TVB13A-PA08

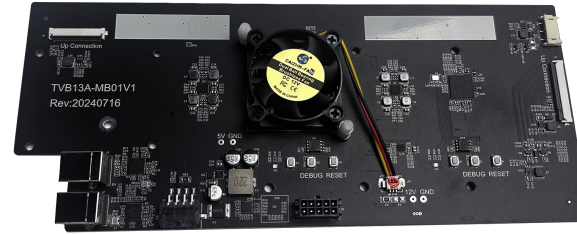


TVB13A-OP01



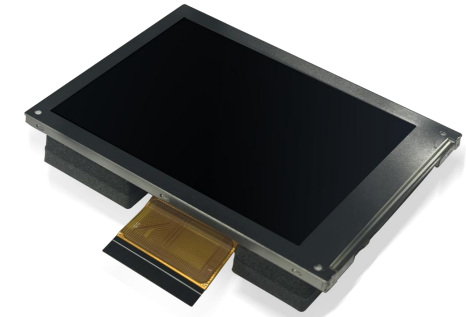
TVB13A-SB02V1

Compatible Service Components



Driver Board for Button Panel

Reference Model: GFA03335-002-09 / GFA03336-003-09
 GFA04313-002 / GFA04269-002-06
 AA Model: TVB13A-MB01V1



3.5" TFT-LCD Module

LCD Model: TX09D40XM3CBA
 AA Model: TLP0351-V1



10.2" TFT-LCD Module

Reference Model
 GFA03335-002-09 / GFA03336-003-09
 GFA04313-002 / GFA04269-002-06

LCD Model
 TX26D25VM2BAA

AA Model
 TLP102F-V1

Compatible with Aristocrat Helix | Helix+ | ARC | Relm | MK7 Viridian
 (Brand name used for identification only)

Part numbers are provided for compatibility reference only.

Compatible Service Components



42" Curved Touch Monitor

Reference OEM P/N: 100435

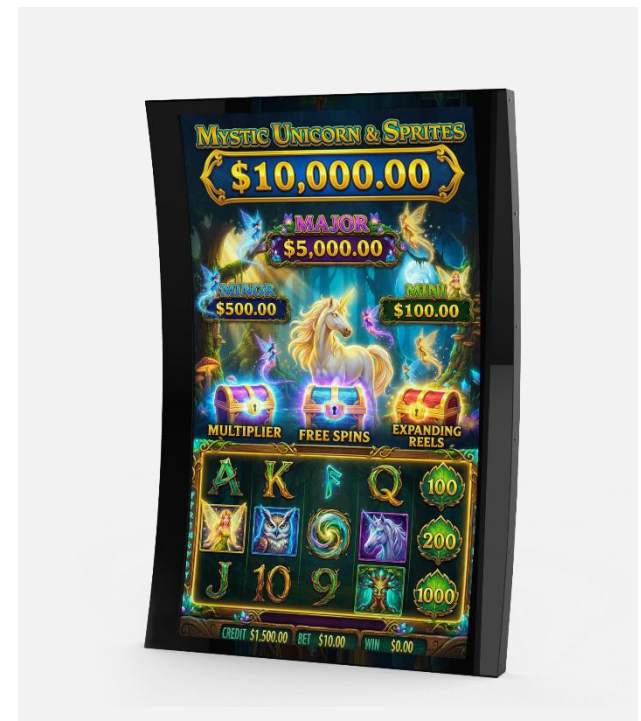
Reference OEM Model: KTC420DPA01

AA Model: TOT4302CPC-V3



Compatible with Aristocrat ARC
(Brand name used for identification only)

Part numbers are provided for compatibility reference only.



Compatible Service Components



Compatible with Aristocrat MarsX
(Brand name used for identification only)

Part numbers are provided for compatibility reference only.



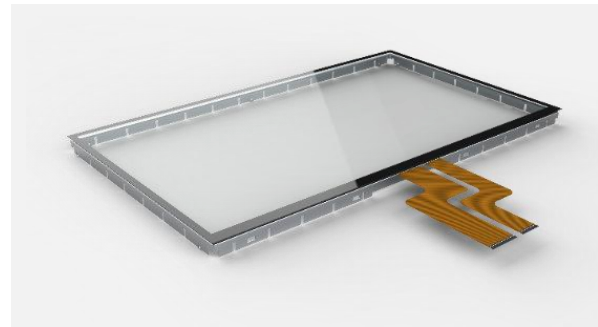
27" LCD (Lower) Touch Monitor

Reference OEM P/N: 178049
Reference Monitor Model: L27EHLT2AR
AA Model: TOT2702EPC-V6



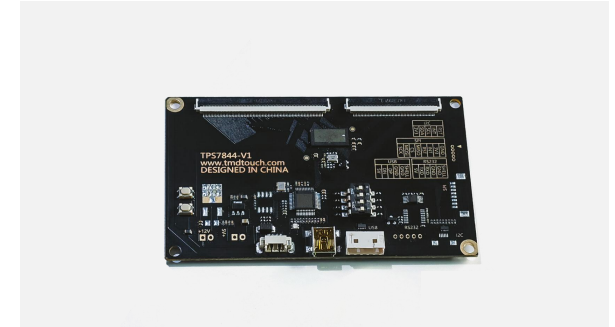
27" LCD (Upper) Monitor

Reference OEM P/N: 178670
Reference Monitor Model: L27EHLG2AR
AA Model: TOM2702E00-V6



27" P-CAP Touchscreen

Reference OEM Model: 178049
Reference Monitor Model: L27EHLT2AR
AA Model: TPC2702-V6GC



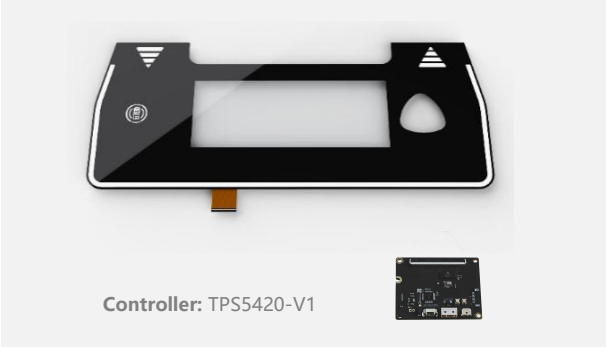
Controller : TPS7844-V1

Compatible Service Components



Compatible with Aristocrat MarsX
(Brand name used for identification only)

Part numbers are provided for compatibility reference only.



Controller: TPS5420-V1

14.3" Touchscreen&Controller

Reference OEM Model: 178135-101
Reference Monitor Model: KTB195DPA01
AA Model: TPC143F-V1GC



19.5" TFT-LCD Module

Reference Monitor Model: KTB195DPA01
Reference LCD Model: SSP1952-YNW-Q31
AA Model: TLP195F-V8



Film Model : TPF43F-V1



Bash Button

Reference Model: W7AB-A08
Reference OEM P/N: 0805386A
AA Model: TPB002-V1

Compatible Service Components



Compatible with Aristocrat Neptune
(Brand name used for identification only)

Part numbers are provided for compatibility reference only.



Controller : TPS7844-V1

23.8" Curved Touchscreen

Reference Monitor Model: KTB238DPA03
AA Model: CPC2382-V1GC



23.8" Curved TFT-LCD Module

Reference Monitor Model: KTB238DPA03
AA Model: CLP2382-V1



Bash Button

Reference Model: W7AB-A15
Reference Button P/N: 1507963A
AA Model: TPB003-V1

Compatible Service Components

19.1" TouchScreen & Controller for Main Touch Monitor

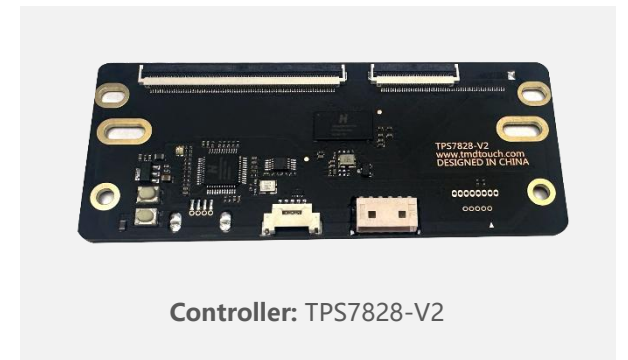
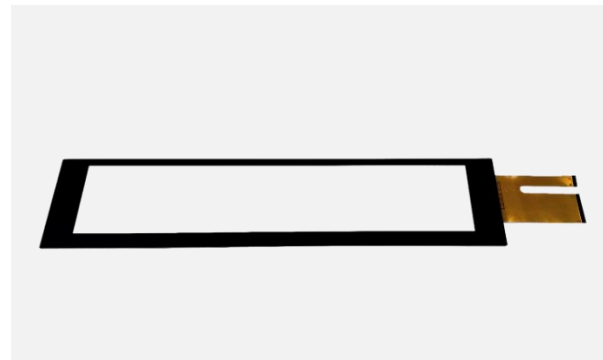
Reference OEM Monitor P/N: 220901

Reference Monitor Model: L21C3ATSAR

AA Model: TPC191F-V1GC



Compatible with Aristocrat Relm
(Brand name used for identification only)



Controller: TPS7828-V2

Compatible Service Components



Compatible with Aristocrat Viridian (MK7)
(Brand name used for identification only)

Part numbers are provided for compatibility reference only.



19" LCD (Lower) Touch Monitor

Reference OEM Monitor P/N: 44127-1
Reference Monitor Model: WGF1990-TSAM02Y
AA Model: TOT1901EPC-V1



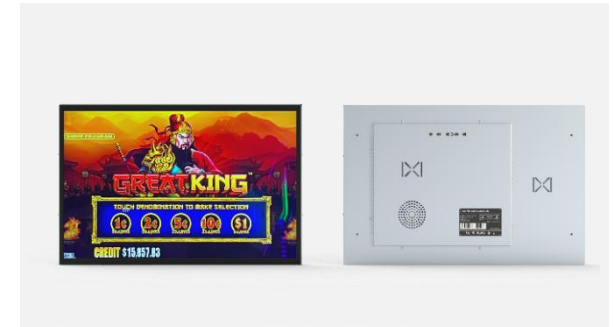
19" LCD (Upper) Monitor

AA Model: TOM1901E00-V1



22" LCD (Lower) Touch Monitor

Reference OEM Monitor P/N: 442287
Reference Monitor Model: KT-LA221X-A9
AA Model: TOT2203EPC-V2



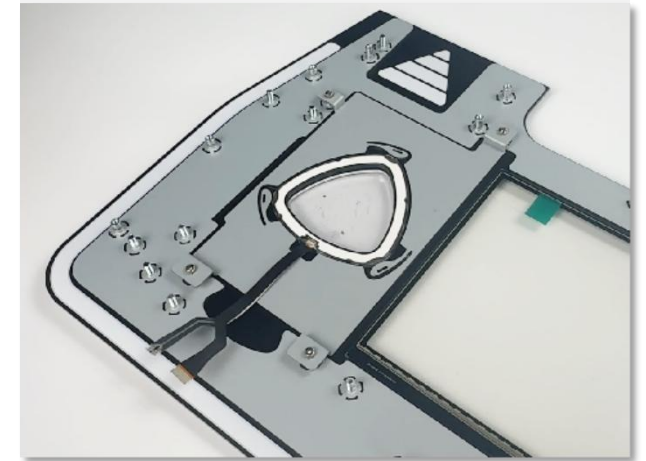
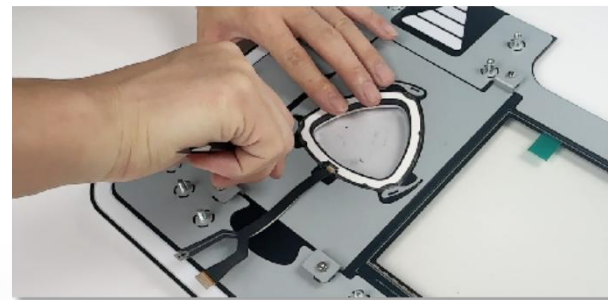
22" LCD (Upper) Monitor

Reference OEM Monitor P/N: 442288
Reference Monitor Model: KT-LA221MCS-A9
AA Model: TOM2203E00-V2

Compatible Service Components



Compatible with Aristocrat MarsX | Neptune | Helix XT
(Brand name used for identification only)



Magic Button Lock for Bash Botton

Light & Wonder Cabinet Platform



SLOT ACCESSORY Zone



Light & Wonder is a registered trademark of Light & Wonder, Inc.
The name is used solely for compatibility identification purposes.

Compatible Service Components



Compatible with Light & Wonder Kascada
(Brand name used for identification only)

Part numbers are provided for compatibility reference only.



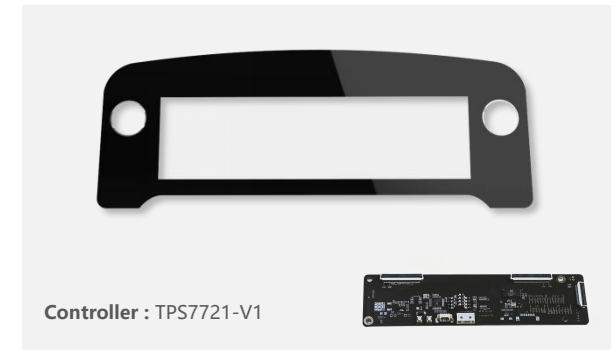
19.4" iDeck

Reference OEM Monitor P/N:

1557381ALT1 / 1570705-VAR / 1570704-VAR

Reference Monitor Model: L21C3AT4SG-SK2 / KTBR19DPS04

AA Model: TOT195FEPC-V5



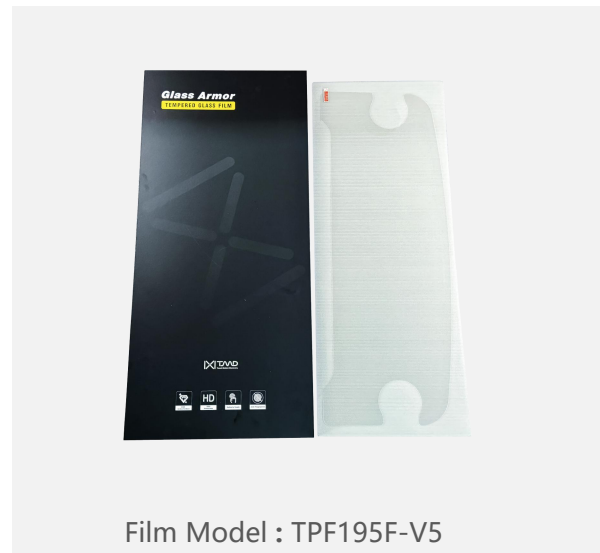
19.4" Touchscreen & Controller

Reference OEM Monitor P/N:

1557381ALT1 / 1570705-VAR / 1570704-VAR

Reference Monitor Model: L21C3AT4SG-SK2 / KTBR19DPS04

AA Model: TPC195F-V5GC



Film Model : TPF195F-V5



19.4" iDeck TFT-LCD Module

[Compatible with Kortek panel configurations]

Reference Monitor Model: KTBR19DPS04 / KTBR19DPS01

LCD Model: SG194

AA Model: TLP195F-V1K

Compatible Service Components



Compatible with Light & Wonder Kascada 27
(Brand name used for identification only)

Part numbers are provided for compatibility reference only.



27" LCD (Lower) Touch Monitor

Reference OEM Monitor P/N: 1570975-VAR / 1570975-ALT3
Reference Monitor Model: KTS270DPS02 / L279BBTMSG
AA Model: TOT2702EPC-V11



27" Touchscreen&Controller

Reference OEM Monitor P/N: 1570975-VAR / 1570975-ALT3
Reference Monitor Model: KTS270DPS02 / L279BBG2SG
AA Model: TPC2702-V11GC



27" LCD (Upper) Monitor

Reference OEM Monitor P/N: 1569779
Reference Monitor Model: L279BBG2SG / KTS270DGS01
AA Model: TOM2702E00-V11



19.4" iDeck TFT-LCD Module

[Compatible with Tovis/Effinet panel configurations]

Reference Monitor Model: L21C3AT4SG-SK2
LCD Model: JL215AH510E
AA Model: TLP195F-V1

Compatible Service Components



Compatible with SG Twinstar J43 | Dual 24
(Brand name used for identification only)

Part numbers are provided for compatibility reference only.



Tempered Glass Film

Reference OEM Monitor P/N:
257464-ALT2 / 257464-ALT3
Reference Monitor Model: L21C3AT3BY / EFH-1903B
AA Model: TPF195F-V2



19.4" iDeck TFT-LCD Module

Reference Monitor Model: L21C3AT3BY
LCD Model: JL215AH510E
AA Model: TLP195F-V1



19.4" iDeck

Reference OEM Monitor P/N:
257464-ALT2 / 257464-ALT3
Reference Monitor Model: L21C3AT3BY / EFH-1903B
AA Model: TOT195EPC-V2



24" LCD (Lower) Touch Monitor

Reference OEM Monitor P/N:
258929-1-ALT1/258929-3-ALT1/258929-10003
Reference Monitor Model:
EFH-2403H/L24C5LT1BY-BKL/L24C5LT3BY-BKU
AA Model: TOT2382EPC-V5



Controller : TPS7721-V1

19.4" Touchscreen&Controller

Reference OEM Monitor P/N:
257464-ALT2 / 257464-ALT3
Reference Monitor Model: L21C3AT3BY / EFH-1903B
AA Model: TPC195F-V2G2



24" Touchscreen&Controller

Reference OEM Monitor P/N:
258929-1-ALT1/258929-3-ALT1/258929-10003
Reference Monitor Model:
EFH-2403H/L24C5LT1BY-BKL/L24C5LT3BY-BKU
AA Model: TPC2382-V5GC

Compatible Service Components



Compatible with SG Wave XL
(Brand name used for identification only)

19.4" Touchscreen&Controller

Reference OEM Monitor P/N: 1492846-01-ALT1
Reference Monitor Model: L21C3ATMSG
AA Model: TPC195F-V6GC



Controller : TPS7721-V1



19.4" iDeck TFT-LCD Module

Reference Monitor Model: L21C3ATMSG
LCD Model: JL215AH510
AA Model: TLP195F-V1



Compatible Service Components



Compatible with SG Matrix
(Brand name used for identification only)

Part numbers are provided for compatibility reference only.



Controller : TPS7721-V1

19.4" Touchscreen&Controller

Reference OEM Monitor P/N: 1532489-ALT1
Reference Monitor Model: L21C3AT3SG
AA Model: TPC195F-V7GC



19.4" iDeck

Reference OEM Monitor P/N: 1532489-ALT1
Reference Monitor Model: L21C3AT3SG
AA Model: TOT195FEPC-V7



19.4" iDeck TFT-LCD Module

Reference Monitor Model: L21C3AT3SG
LCD Model: JL215AH510
AA Model: TLP195F-V1



Tempered Glass Film

Reference OEM Monitor P/N: 1532489-ALT1
Reference Monitor Model: L21C3AT3SG
AA Model: TPF195F-V7

Compatible Service Components



Compatible with Bally Alpha 2 Pro V27 | V32 | Curve | Stepper
(Brand name used for identification only)

Part numbers are provided for compatibility reference only.



Controller : TPS7721-V1

14.9" Touchscreen&Controller

Reference OEM Monitor P/N: 219621
Reference Monitor Model:
L1946L31BY-H1 / L14HA35MTW42A11
AA Model: TPC150F-V1GC



14.9" iDeck

Reference OEM Monitor P/N: 219621
Reference Monitor Model:
L1946L31BY-H1 / L14HA35MTW42A11
AA Model: TOT150FEPC-V1



27" LCD (Lower) Touch Monitor

Reference OEM Monitor P/N: 249666-10001
Reference Monitor Model: L2765L31BY-BKL
AA Model: TOT2702EPC-VX



14.9" iDeck TFT-LCD Module

Reference Monitor Model:
L1946L31BY-H1 / L14HA35MTW42A11
LCD Model: TX38D09VM0CAA / TX38D25VM0CAA
AA Model: TLP150F-V1

Compatible Service Components



Compatible with Bally Alpha 2 Pro Wave
(Brand name used for identification only)

Part numbers are provided for compatibility reference only.



Controller : TPS7721-V1

14.9" Touchscreen&Controller

Reference OEM Monitor P/N: 237761
Reference Monitor Model:
L1946L31BY-AH1 / L14HA35MTW42AI5
AA Model: TPC150F-V2GC



Tempered Glass Film

Reference OEM Monitor P/N: 237761
Reference Monitor Model:
L1946L31BY-AH1 / L14HA35MTW42AI5
AA Model: TPF150F-V2



14.9" iDeck

Reference OEM Monitor P/N: 237761
Reference Monitor Model:
L1946L31BY-AH1 / L14HA35MTW42AI5
AA Model: TOT150FEPC-V2



14.9" iDeck TFT-LCD Module

Reference Monitor Model:
L1946L31BY-AH1 / L14HA35MTW42AI5
LCD Model: TX38D09VM0CAA / TX38D25VM0CAA
AA Model: TLP150F-V1

Compatible Service Components



Compatible with SG DualOS
(Brand name used for identification only)

23" LCD (Lower) Touch Monitor

Reference OEM Monitor P/N: 1449764

Reference Monitor Model: L23C5LTMSG-V7

AA Model: TOT2302EPC-V5

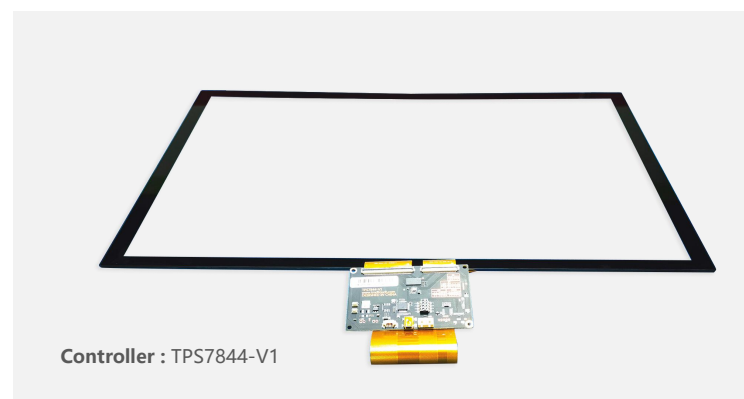


23" LCD (Upper) Monitor

Reference OEM Monitor P/N: 1449764

Reference Monitor Model: L23C5LTMSG-V7

AA Model: TOM2302E00-V5



Controller : TPS7844-V1

23" Touchscreen&Controller

Reference OEM Monitor P/N: 1449764

Reference Monitor Model: L23C5LTMSG-V7

AA Model: TPC2302-V5GC

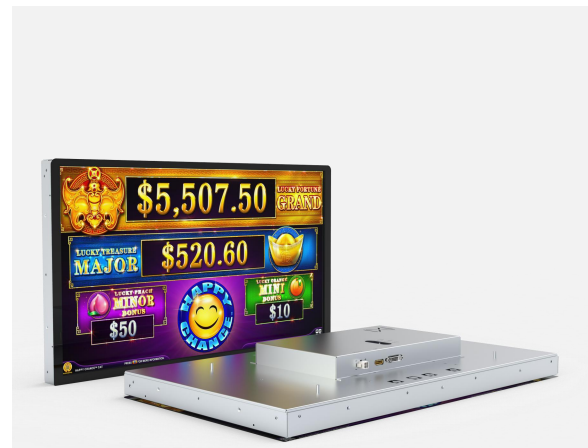
Compatible Service Components



Compatible with SG DualOS X
(Brand name used for identification only)

27" LCD (Lower) Touch Monitor

Reference OEM Monitor P/N: 1510118-00001
Reference Monitor Model: EFH-2703H
AA Model: TOT2702EPC-V12



27" LCD (Upper) Monitor

Reference OEM Monitor P/N: 1510119-00001
Reference Monitor Model: EFH-2703H
AA Model: TOM2702E00-V12

Compatible Service Components



Compatible with Light & Wonder Cosmic
(Brand name used for identification only)

Part numbers are provided for compatibility reference only.

18.5" Touchscreen&Controller

Reference OEM Monitor P/N: 1580044-VAR, 1580044-ALT1 / 1580044-VAR2, 1580044-ALT3

Reference Monitor Model: L18M7AT0LW / KTB185DPS01

AA Model: TPC1852-V1GC



Film Model : TPF1852-V1



Controller : TPS7844-V1



18.5" iDeck TFT-LCD Module

[Compatible with Tovis panel configurations]

Reference Monitor Model: L18M7AT0LW / KTB185DPS01

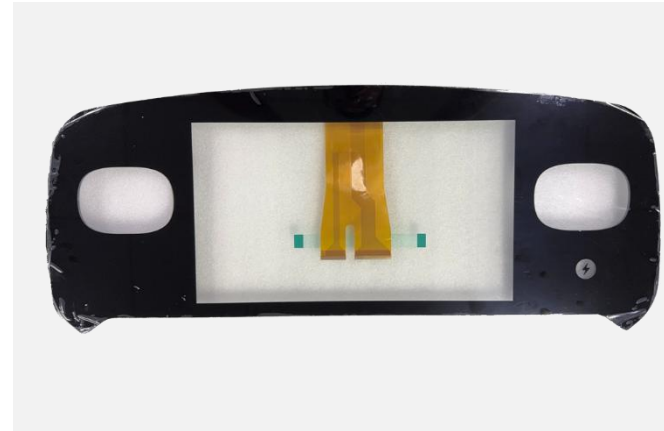
LCD Model: G185HAN01.0

AA Model: TLP1852-V1

Compatible Service Components



Compatible with Light & Wonder Cosmic Upright
(Brand name used for identification only)



Controller : TPS7844-V1

15.6" Touchscreen&Controller

Reference Monitor Model: KTB156DPS01

AA Model: TPC1562-V2GC

Compatible Service Components



Compatible with Light & Wonder Mural
(Brand name used for identification only)

15.6" TouchScreen&Controller

Reference OEM Monitor P/N: 1552744-ALT1
Reference Monitor Model: L15B5ITMSG
AA Model: TPC1562-V1GC



Controller : TPS7828-V2



15.6" iDeck TFT-LCD Module

Reference Monitor Model: L15B5ITMSG
LCD Model: N156SILAC0
AA Model: TLP1562-V1

Part numbers are provided for compatibility reference only.

Compatible Service Components



14.1" TouchScreen& Controller for iDeck

Reference Monitor Model: L15MFIT0LW

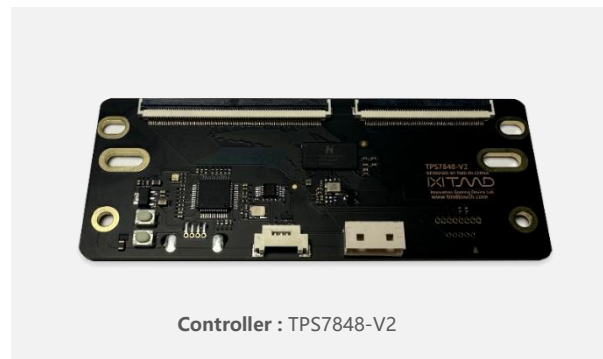
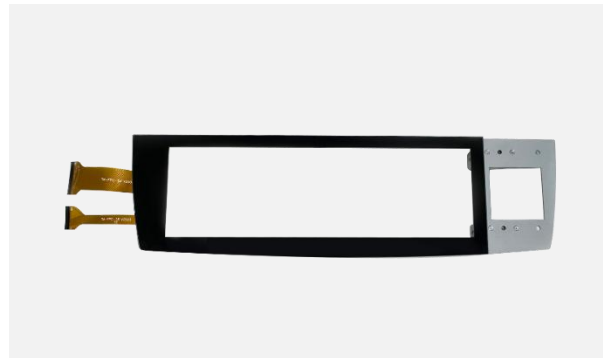
Reference OEM Monitor P/N: 1594321-50

AA Model: TPC141F-V1GC



Compatible with Light & Wonder LandMark 7000 Transparent | Transparent Digital Wheel (Brand name used for identification only)

Part numbers are provided for compatibility reference only.



Controller : TPS7848-V2



Compatible Service Components

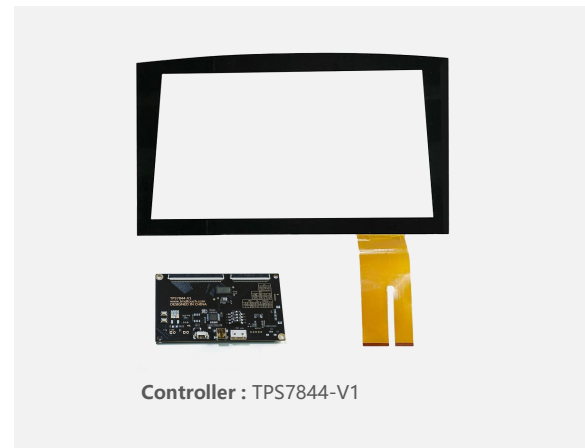


Compatible with SG Fusion Auto Roulette | Fusion Hybrid | Fusion Virtual Multigame | Table Master Fusion
(Brand name used for identification only)

Part numbers are provided for compatibility reference only.

21.5" LCD Touch Monitor

Reference Monitor Model: EFL-2103H
AA Model: TOT2152EPC-V2S



Controller : TPS7844-V1

21.5" Touchscreen&Controller

Reference Monitor Model: EFL-2103H
AA Model: TPC2152-V2GC

Compatible Service Components



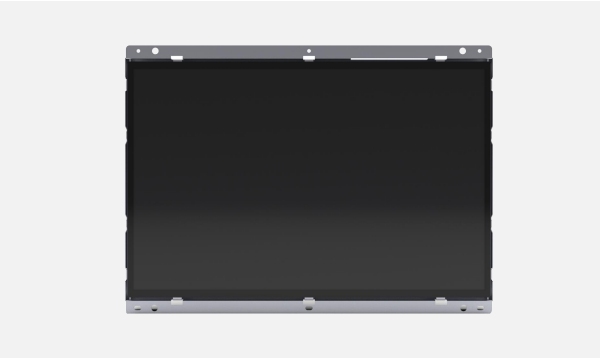
22" LCD (Lower) Touch Monitor

Reference Monitor Model: EFL-2203W

AA Model: TOT2203EPC-V3



Compatible with Shuffle Master Equinox
(Brand name used for identification only)



Part numbers are provided for compatibility reference only.

IGT Cabinet Platform



SLOT ACCESSORY Zone



IGT is a registered trademark of International Game Technology PLC.
The name is used solely for compatibility identification purposes.

Compatible Service Components



Compatible with IGT CrystalSlant | CrystalDual
(Brand name used for identification only)

Part numbers are provided for compatibility reference only.



Controller: TPS3224-V1

10.1" Touchscreen&Controller

Reference OEM Monitor P/N: 91162400
Model: KTS101DNI02
AA Model: TPC1013-V1GC



Controller: TPS3224-V1

10.1" Touchscreen&Controller

Reference OEM Monitor P/N: 91162401
Reference Monitor Model: KTS101DNI02
AA Model: TPC1013-V2GC



Controller: TPS3224-V1

10.1" Touchscreen&Controller

Reference OEM Monitor P/N: 81510802
Reference Monitor Model: KTL101S-02
AA Model: TPC1013-V3GC



Controller: TPS3224-V1

10.1" Touchscreen&Controller

Reference OEM Monitor P/N: 86700500
Reference Monitor Model: KTS101DNI01
AA Model: TPC1013-V5GC



Controller: TPS7844-V1

27" Touchscreen&Controller

Reference Monitor Model: 69978801
Reference Monitor Model: KTS270DPI04
AA Model: TPC2702-V5GC



Compatible Service Components

23" Curved Touchscreen&Controller

Reference OEM Monitor P/N: 69980500
Reference Monitor Model: KTC230DPI01
AA Model: CPC2302-V1GC

Reference OEM Monitor P/N: 69980501
Reference Monitor Model: KTC230DPI02
AA Model: CPC2302-V1GC



Compatible with IGT PeakBarTop
(Brand name used for identification only)

Part numbers are provided for compatibility reference only.



Controller : TPS7844-V1



Compatible Service Components



13.3" Touchscreen for Button Deck

Reference OEM Monitor P/N: 69980301

Reference Monitor Model: KTB133DPI04

AA Model: TPC1332-V3GC



Compatible with IGT Peak
(Brand name used for identification only)



Part numbers are provided for compatibility reference only.

Compatible Service Components



Compatible with IGT AXXIS
(Brand name used for identification only)

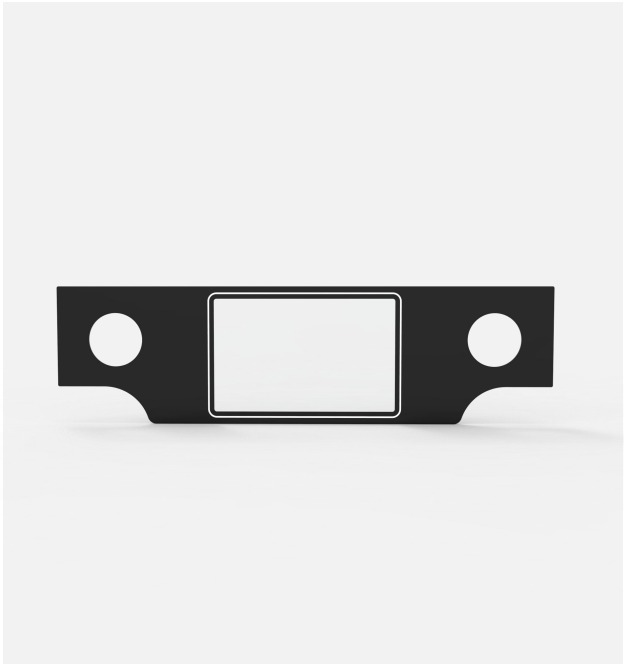
Part numbers are provided for compatibility reference only.

10.1" Touchscreen for Button Deck

Reference OEM Monitor P/N: 2402905-03/01

Reference Monitor Model: KTK101DPG01

AA Model: TPC1013-V6GC



Compatible Service Components



Compatible with IGT G20 | G23
(Brand name used for identification only)

Flex Harness (Ribbon Cable)

IGT factory refurbished Reference replacement 14-pin ribbon cable for IGT edge-lit and **non-edge-lit button panels**.

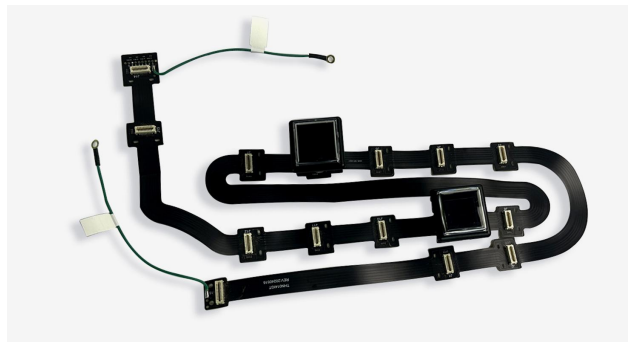
Includes daughter board, and serves as a drop-in replacement for the Reference button ribbon.

ASY P/N: 76301602W Material: PCB, Flex Harness

Buttons: IGT 14 dynamic buttons, 1x2, 2x5, 1x2

Application: Replacement

AA Model: THN014IGT-V1



6.2" Player Tracking Display

Aftermarket Service Replacement Kit
(Compatible with IGT Platforms)

*Independently engineered aftermarket components designed for field maintenance and lifecycle support.



AA Model: TOT062FERC-V1

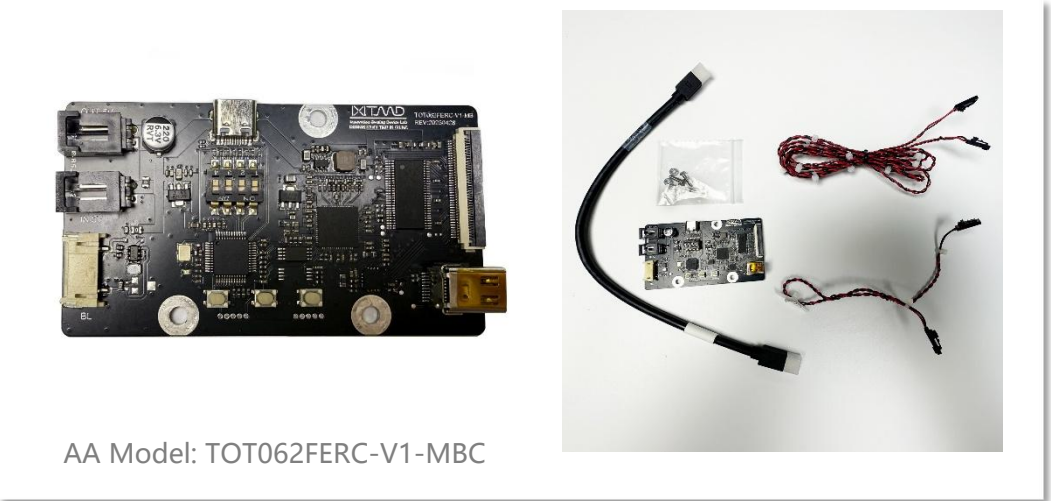


6.2" Player Tracking Display with 4-Wire Resistive Touchscreen
Designed for service replacement of existing player tracking display assemblies.



AA Model: TLP062F-V1R

6.2 " LCD Panel with 4-Wire Resistive Touchscreen
For player tracking display applications.



AA Model: TOT062FERC-V1-MBC

Driver Board Upgrade Kit
For 6.2" Player Tracking Display (IGT-compatible)

Aruze Gaming Cabinet Platform

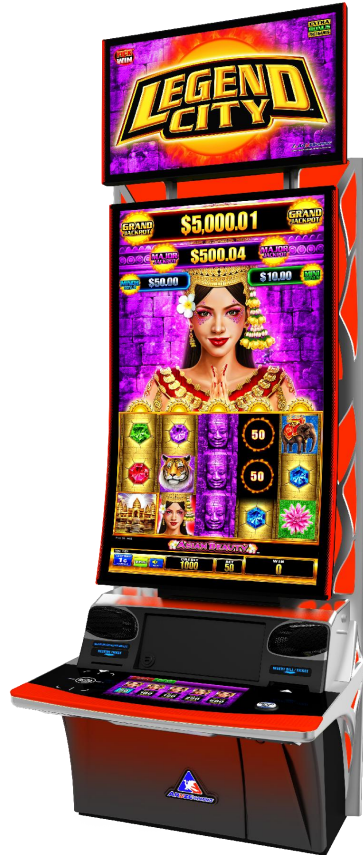


SLOT ACCESSORY Zone



Aruze Gaming is a registered trademark of Aruze Gaming Global.
The name is used solely for compatibility identification purposes.

Compatible Service Components



Compatible with Aruze Muso Triple-27 | Curve-43
(Brand name used for identification only)

Part numbers are provided for compatibility reference only.



47mm Button 13.3" Touchscreen

Reference OEM Monitor P/N: 346313100014
Reference Monitor Model: QM-133BD-OPDR03
AA Model: TPC1332-V1GC



52mm Button 13.3" Touchscreen

Reference OEM Monitor P/N: 346313100014
Reference Monitor Model: QM-133BD-OPDR03
AA Model: TPC1332-V2GC



13.3" LCD Button Deck (47mm)

Reference OEM Monitor P/N: 346313100014
Reference Monitor Model: QM-133BD-OPDR03
AA Model: TOT1332EPC-V1



13.3" LCD Button Deck (52mm)

Reference OEM Monitor P/N: 346313100014
Reference Monitor Model: QM-133BD-OPDR03
AA Model: TOT1332EPC-V2



27" LCD (Upper) Monitor

Reference OEM Monitor P/N:
Reference Monitor Model:
AA Model: TOM2702EU0-V16



27" LCD (Lower) Touch Monitor

Reference OEM Monitor P/N:
Reference Monitor Model:
AA Model: TOT2702EPC-V16

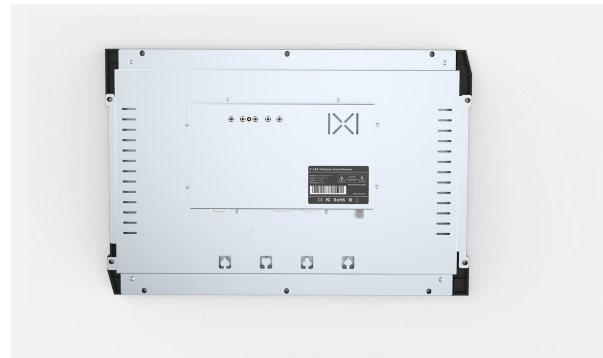
Compatible Service Components



21.5" Touch Monitor

Reference Monitor Model: W21UDL20-J7-A1

AA Model: TOT2152EPC-V1



Compatible with Aruze Dragon Sic Bo | Lucky Sic Bo | Shoot to Win Craps
(Brand name used for identification only)

Part numbers are provided for compatibility reference only.

Compatible Service Components

43" Curved Monitor



Compatible with Aruze Dragon Sic Bo
(Brand name used for identification only)

Part numbers are provided for compatibility reference only.



R800 Curved Monitor

AA Model: TOM4302D00-V2



R1000 Curved Monitor

AA Model: TOM4302D00-V1



Compatible Service Components



23" Touchscreen&Controller

Reference Monitor Model: W23UDZ21-3D

AA Model: TPC2302-V8GC

23" Monitor

Reference Monitor Model: W23UDZ21-3D

AA Model: TOM2302E00-V8



Compatible with Aruze Lucky Roulette | Super Big Wheel | Shoot to Win Craps-Lucky Roll
(Brand name used for identification only)

Part numbers are provided for compatibility reference only.

Compatible Service Components



Cube X Video-23 23" Touch Monitor

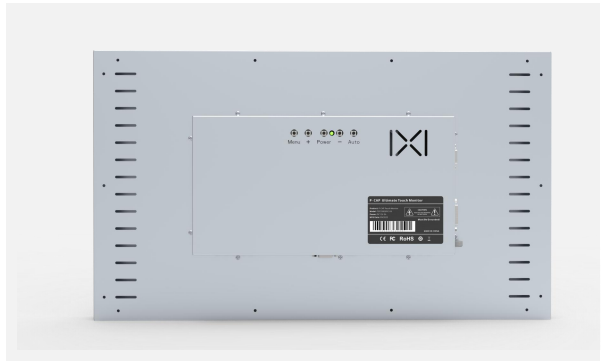
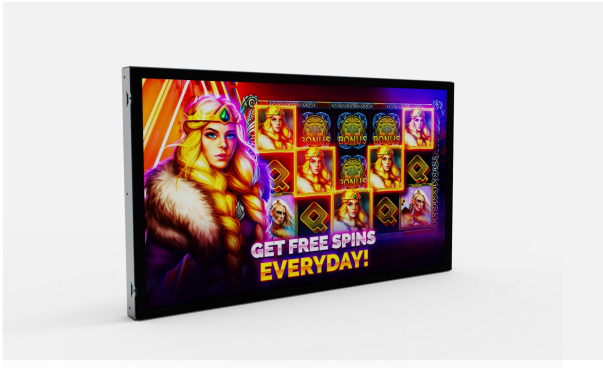
Reference Monitor Model: KTS230DN101

Reference Monitor Model: W23UDL20-S3D-H0

AA Model: TOT2302EPC-V3



Compatible with Aruze Cube X Video-23
(Brand name used for identification only)



Part numbers are provided for compatibility reference only.

Ainsworth Cabinet Platform

SLOT

ACCESSORY Zone



Ainsworth is a registered trademark of Ainsworth Game Technology Limited.
The name is used solely for compatibility identification purposes.

Compatible Service Components



Compatible with Ainsworth A600 | A600ST | A640 | A640SBT | EVO
(Brand name used for identification only)

Part numbers are provided for compatibility reference only.

15.1" Touchscreen&Controller

Reference OEM Monitor P/N: 025088/025077
Reference Monitor Model:
QM-151BD-OPCR01 / QM-151BD-OP8R03
AA Model: TPC151F-V1GC



Tempered Glass Film

Reference OEM Monitor P/N: 025088/025077
Reference Monitor Model:
QM-151BD-OPCR01 / QM-151BD-OP8R03
AA Model: TPF151F-V1



15.1" Button Deck

Reference OEM Monitor P/N: 025088/025077
Reference Monitor Model:
QM-151BD-OPCR01 / QM-151BD-OP8R03
AA Model: TOT151FEPC-V1



Compatible Service Components



Compatible with Ainsworth A-STAR A727 | Curve A743 | Curve XL A755
(Brand name used for identification only)

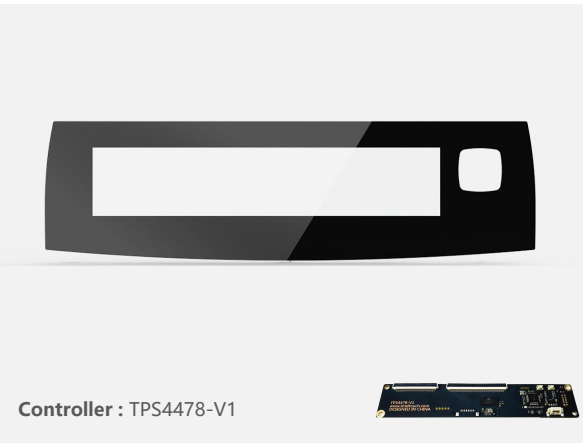
Part numbers are provided for compatibility reference only.

15.1" Button Deck

Reference Monitor Model: QM-151BD-OPCR10

Reference OEM Monitor P/N: 025119

AA Model: TOT151FEPC-V2



Controller : TPS4478-V1

15.1" Touchscreen&Controller

Reference OEM Monitor P/N: 025119

Reference Monitor Model: QM-151BD-OPCR10

AA Model: TPC151F-V2GC

EVERI Cabinet Platform

Everi is a registered trademark of Everi Holdings Inc.
The name is used solely for compatibility identification purposes.



Compatible Service Components



Compatible with Everi Empire Flex | Empire Flex Fusion | Everi Empire MPX
(Brand name used for identification only)

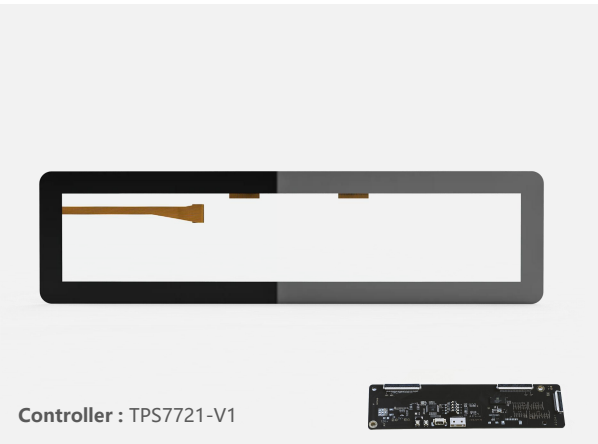
Part numbers are provided for compatibility reference only.

15.3" Touchscreen&Controller

Reference Monitor Model: EFL-1533B
AA Model: TPC153F-V6GC



Controller : TPS7844-V1



Controller : TPS7721-V1

14.9" Touchscreen&Controller

Reference OEM Monitor P/N: 7000428
Reference Monitor Model:
L14HP35MMTW42A1,L14HP35MMTW42A2
AA Model: TPC150F-V3GC

Compatible Service Components



Compatible with Everi Core HDX | Empire MPX | Empire DCX | Empire Arena
(Brand name used for identification only)

Part numbers are provided for compatibility reference only.

14.9" Button Deck

Reference Monitor Model:
L14HP35MMTW42A1 / L14HP35MMTW42A2
Reference OEM Monitor P/N: 7000428
AA Model: TOT150FEPC-V3



14.9" iDeck TFT-LCD Module

Reference Monitor Model:
L14HP35MMTW42A1 / L14HP35MMTW42A2
LCD Model:
TX38D09VM0CAA / TX38D25VM0CAA
AA Model: TLP150F-V1

EGT Cabinet Platform



SLOT ACCESSORY Zone



EGT is a registered trademark of Euro Games Technology Ltd.
The name is used solely for compatibility identification purposes.

Compatible Service Components

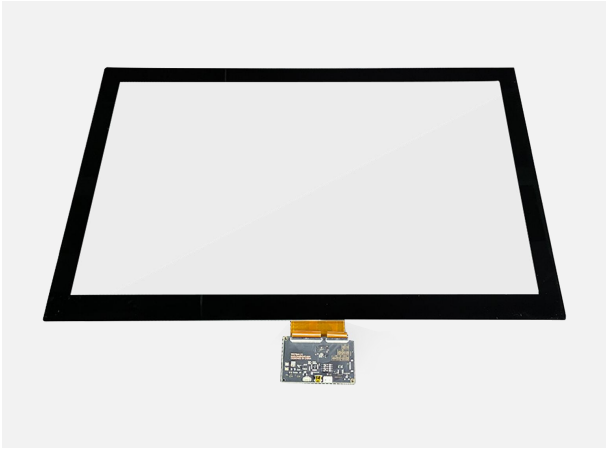


Compatible with EGT Multiplayer S32
(Brand name used for identification only)

Part numbers are provided for compatibility reference only.

32" LCD Touch Monitor

Reference OEM Monitor P/N: 31160732
Reference Monitor Model: KTS320DPE02
AA Model: TOT3202EPC-V5



32" Touchscreen&Controller

Reference OEM Monitor P/N: 31160732
Reference Monitor Model: KTS320DPE02
AA Model: TPC3202-V5GC

Compatible Service Components



22" LCD Touch Monitor

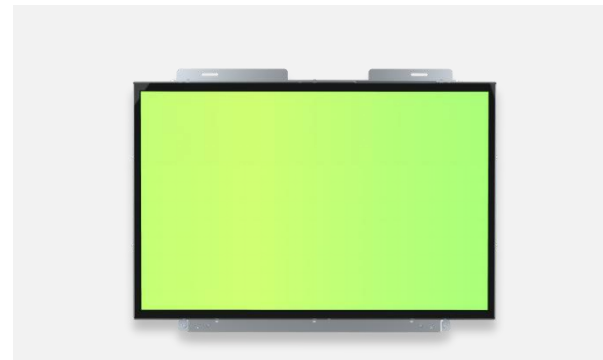
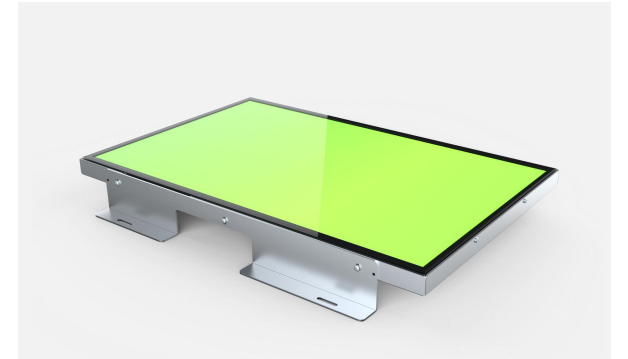
Reference Monitor Model: KT-LS220MC

AA Model: TOT2203EPC-V6



Compatible with EGT Roulette R8
(Brand name used for identification only)

Part numbers are provided for compatibility reference only.



KONAMI | JUMBO | SPINTEC Cabinet Platform



SLOT ACCESSORY Zone



KONAMI is a registered trademark of Konami Gaming, Inc.
JUMBO is a registered trademark of Jumbo Technology Co., Ltd.
SPINTEC is a registered trademark of Spintec d.o.o.
The name is used solely for compatibility identification purposes.

Compatible Service Components



Dimension 27/49



Concerto



KGP KX43

Compatible with KONAMI Dimension 27/49 | Concerto | KGP KX43
(Brand name used for identification only)

Part numbers are provided for compatibility reference only.



15.3" Touchscreen&Controller (KX43)

Reference OEM Monitor P/N: 310992
Reference Monitor Model: L1946BPJKN
AA Model: TPC153F-V3GC



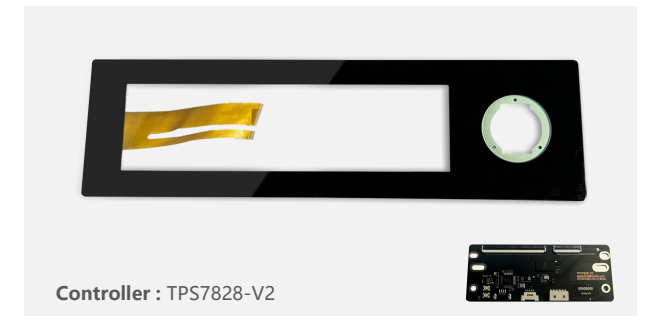
15.3" Touchscreen&Controller (Concerto)

Reference OEM Monitor P/N: 310785-A / 310785-D
Reference Monitor Model: L1946BP1KN
AA Model: TPC153F-V1GC



15.3" Touchscreen&Controller (Dimension)

Reference OEM Monitor P/N: 311195
Reference Monitor Model: L1946BPSKN
AA Model: TPC153F-V5GC



15.3" Touchscreen&Controller (Concerto)

Reference OEM Monitor P/N: 311055
Reference Monitor Model: L1946BP2KN
AA Model: TPC153F-V2GC

Compatible Service Components



Compatible with JUMBO Dual 27
(Brand name used for identification only)

Part numbers are provided for compatibility reference only.

27" LCD (Lower) Touch Monitor

Reference OEM Monitor P/N: ME001-317

Reference Monitor Model: TEF-27F-PUK-A8A-C

AA Model: TOT2702EPC-V15



27" LCD (Upper) Monitor

Reference OEM Monitor P/N: ME001-318

Reference Monitor Model: TEF-27F-NNK-A8A

AA Model: TOM2702E00-V15



Compatible Service Components



27" 4K Touch Monitor

Reference OEM P/N: U24040040

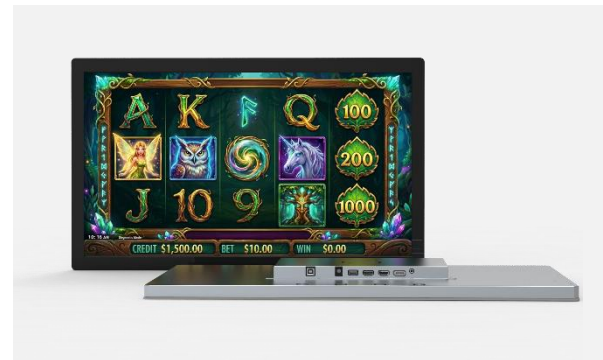
Reference OEM Model: INF-2703UHNBBPC-U

AA Model:TOT2702EPC-V17



Compatible with Spintec Charisma
(Brand name used for identification only)

Part numbers are provided for compatibility reference only.





Trademark & Compatibility Notice

Cabinet names, platform references, model codes, and OEM reference part numbers are used solely for identifying mechanical, electrical, or interface compatibility.

All trademarks and registered trademarks are the property of their respective owners.

